



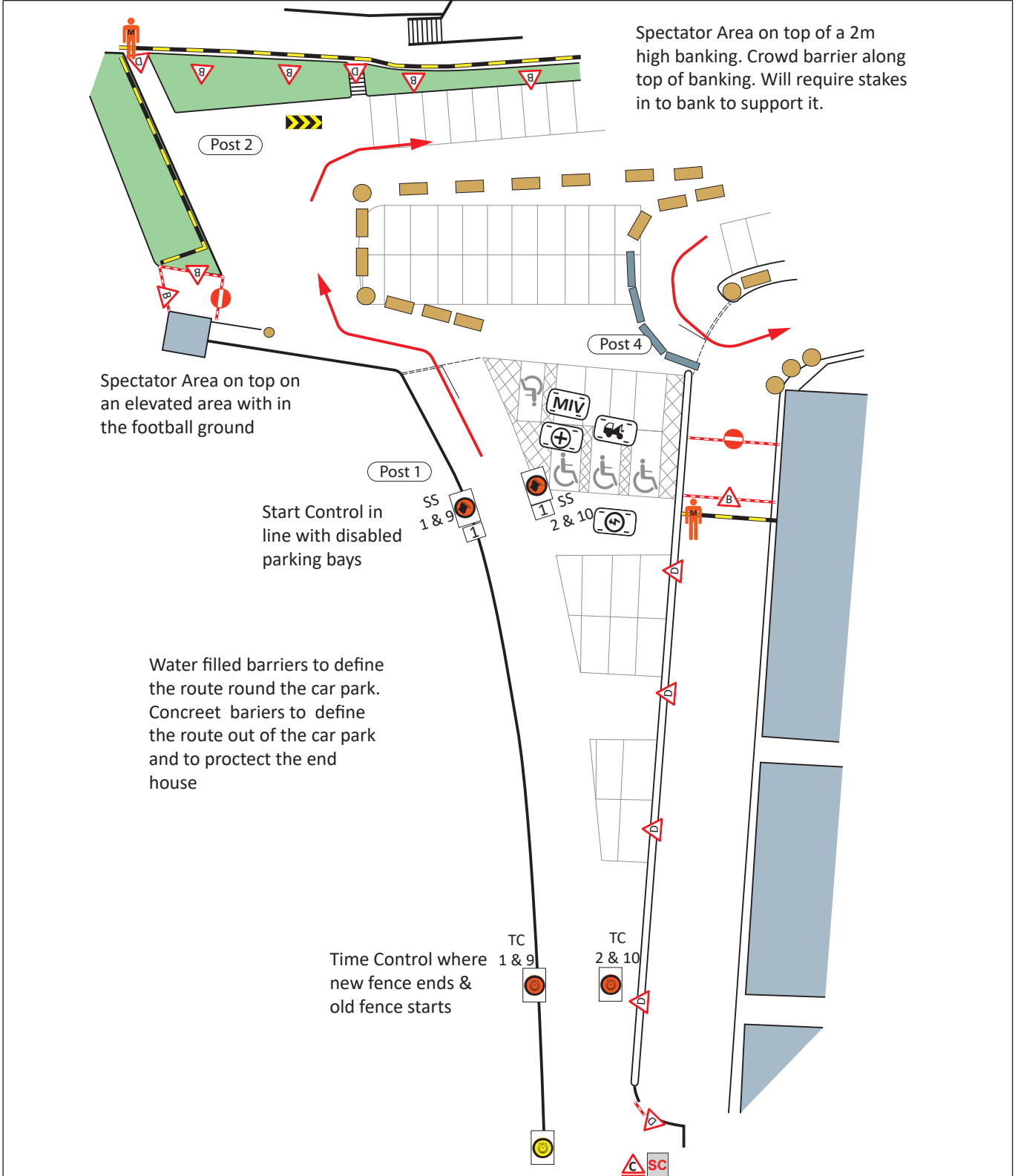


© Crown Copyright and database rights 2019 OS 100034184

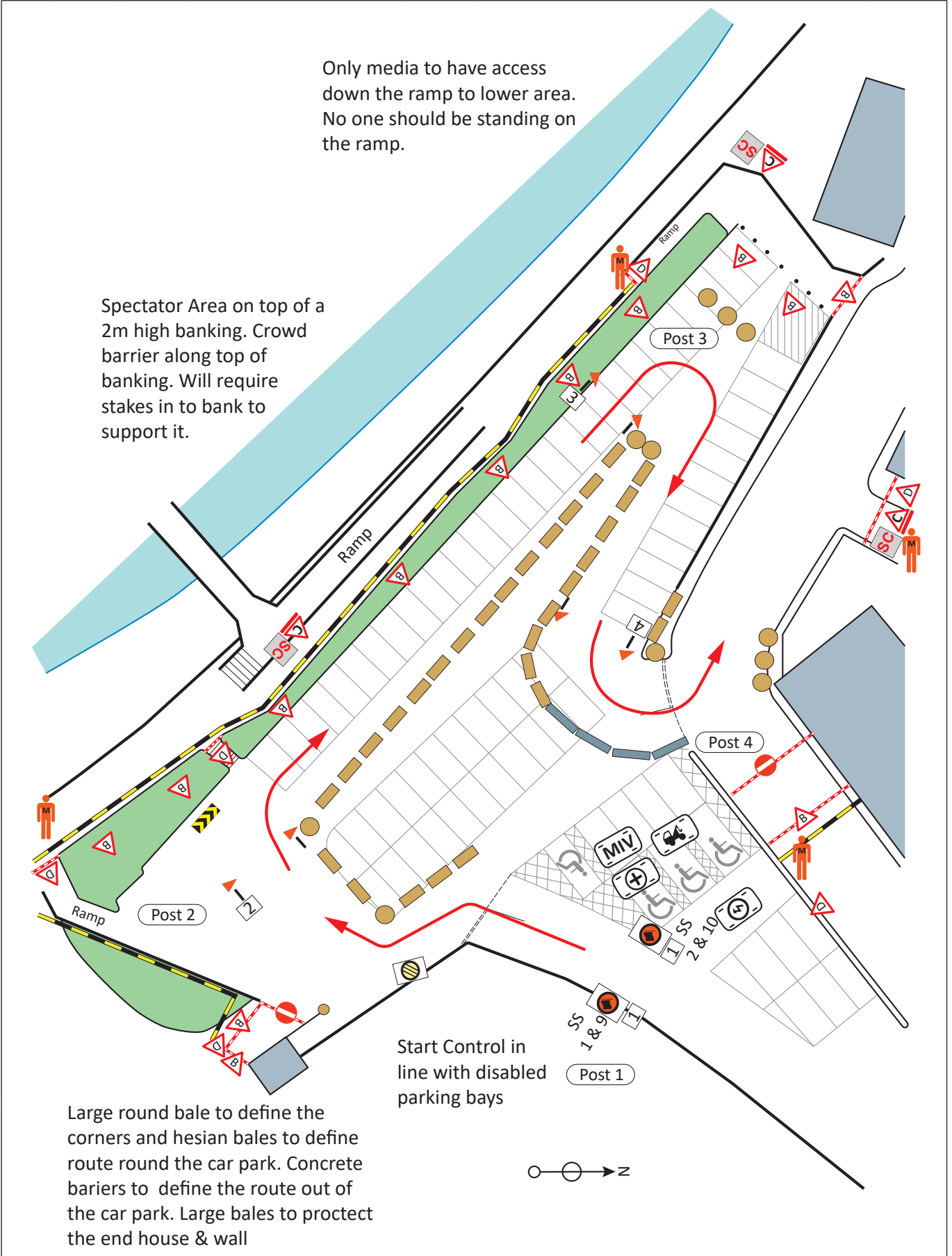
Version 5 - Updated plan for Post 16 to show correct location of the Flying Finish (Distances, GPS & W3W were correct)

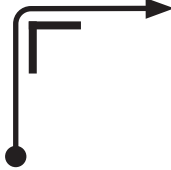

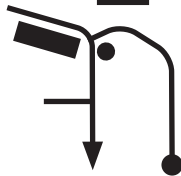
Post No.	Km / Miles		Direction	Safety & Radio	Information	Predicted Marshals
	Total	Inter				
TC	--	--			TC 1, 2, 9 & 10 52°24.686'N, 4°04.892'W ///paddocks.blushes.reminder Notice D, Notice C & Safety Code at entrance to car park	1M 4TK
1	--				Start SS 1, 2, 9 & 10 52°24.667'N, 4°04.917'W ///grounding.vital.cherish	


Post No.	Km / Miles		Direction	Safety & Radio	Information	Predicted Marshals
	Total	Inter				
1	0.00	0.00			Start SS 1, 2, 9 & 10 Straw bales to define the stage route	1RM 4TK
	0.00	0.00				

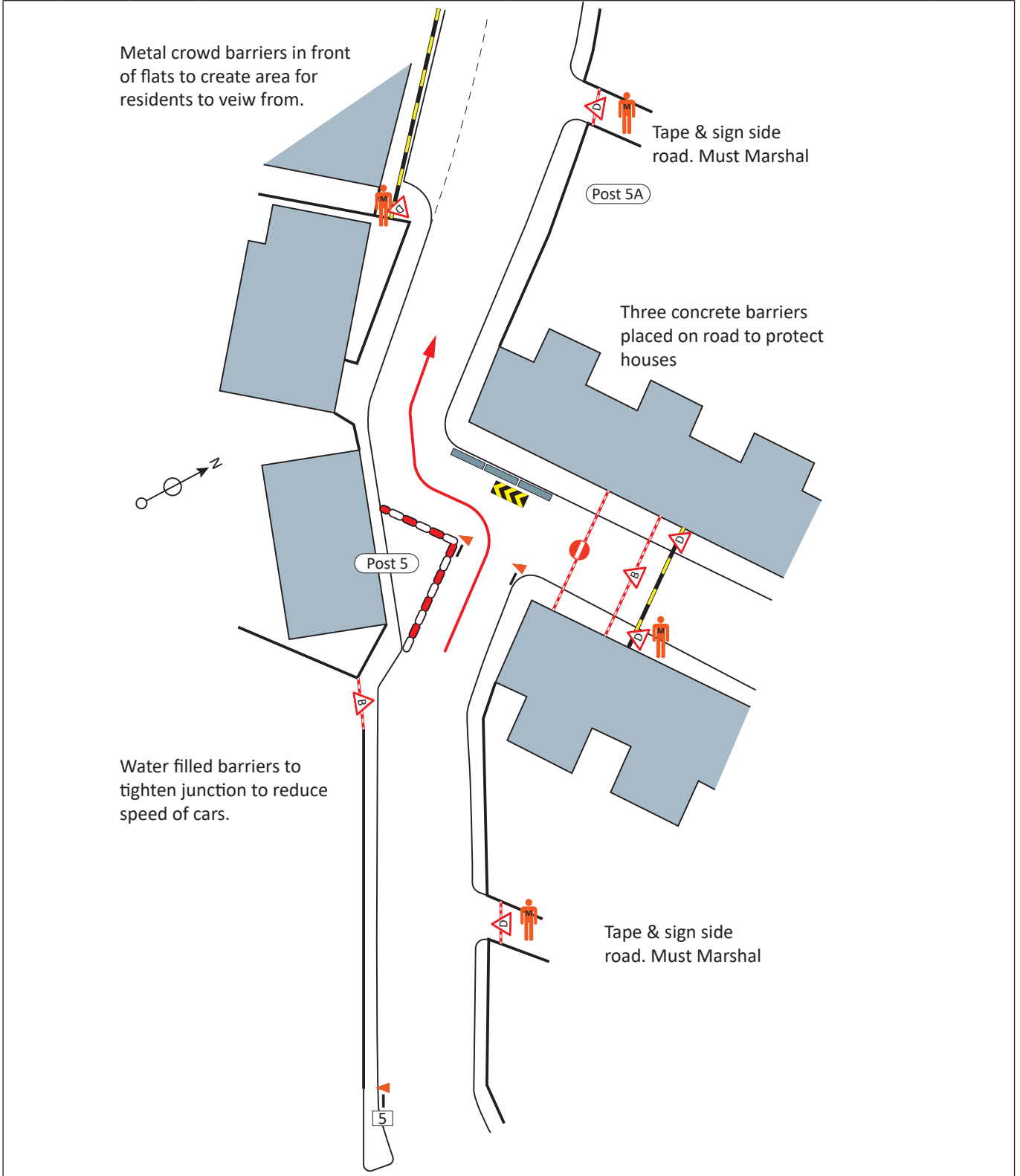





Post No.	Miles		Direction	Safety & Radio	Information	Predicted Marshals
	Total	Inter				



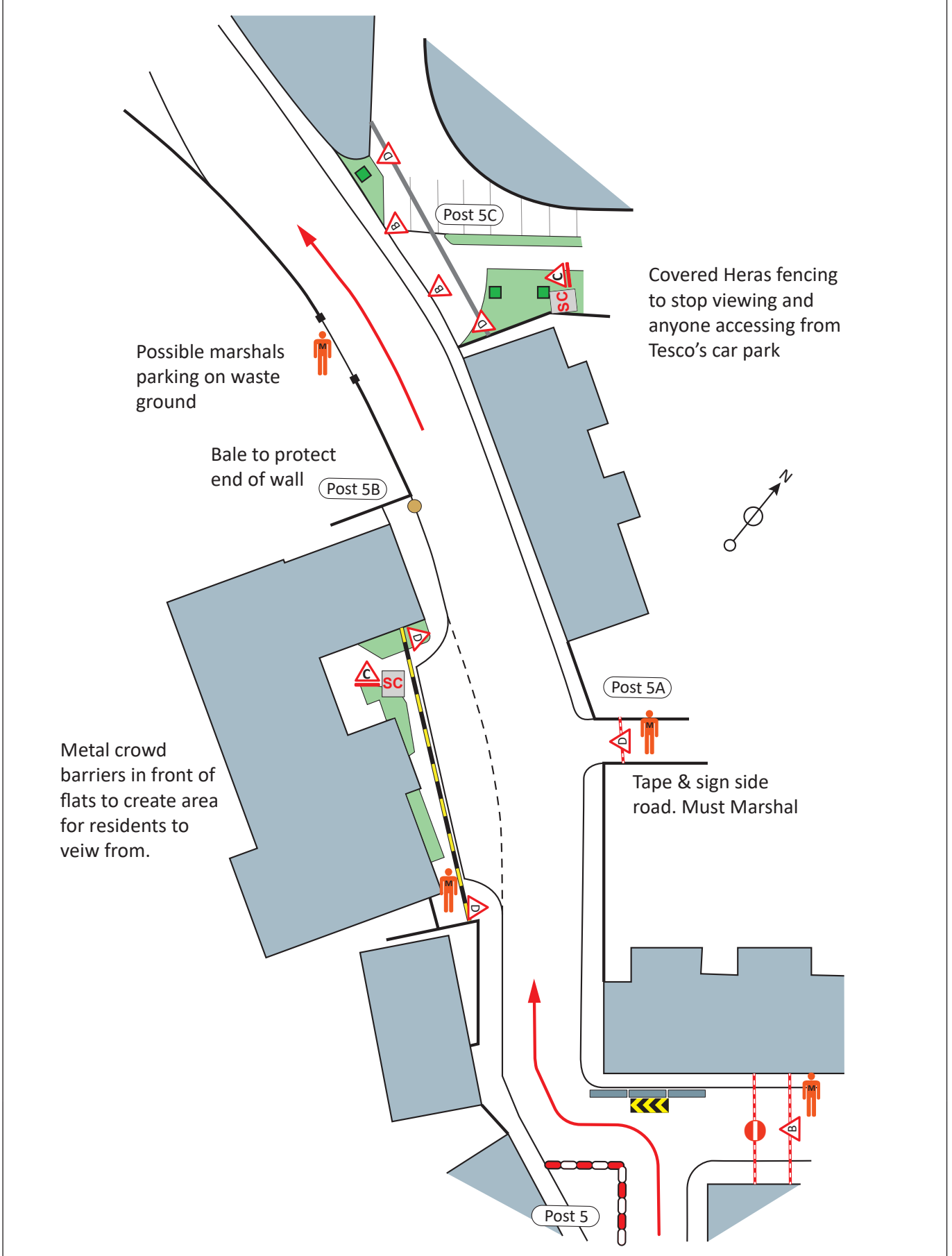
Post No.	Km / Miles		Direction	Safety & Radio	Information	Predicted Marshals
	Total	Inter				
2	0.03 0.02	0.03 0.02			Concrete barrier to define the corner Use barriers to define route to Post 3	1
3	0.08 0.05	0.05 0.03			Concrete barrier	1
4	0.13 0.08	0.05 0.03			Bale on apex to stop cutting Block alley way on right Marshal in back street	1

Post No.	Km / Miles		Direction	Safety & Radio	Information	Predicted Marshals
	Total	Inter				
5	0.19 0.12	0.06 0.04			Tightened Junction Block alley way on right	1

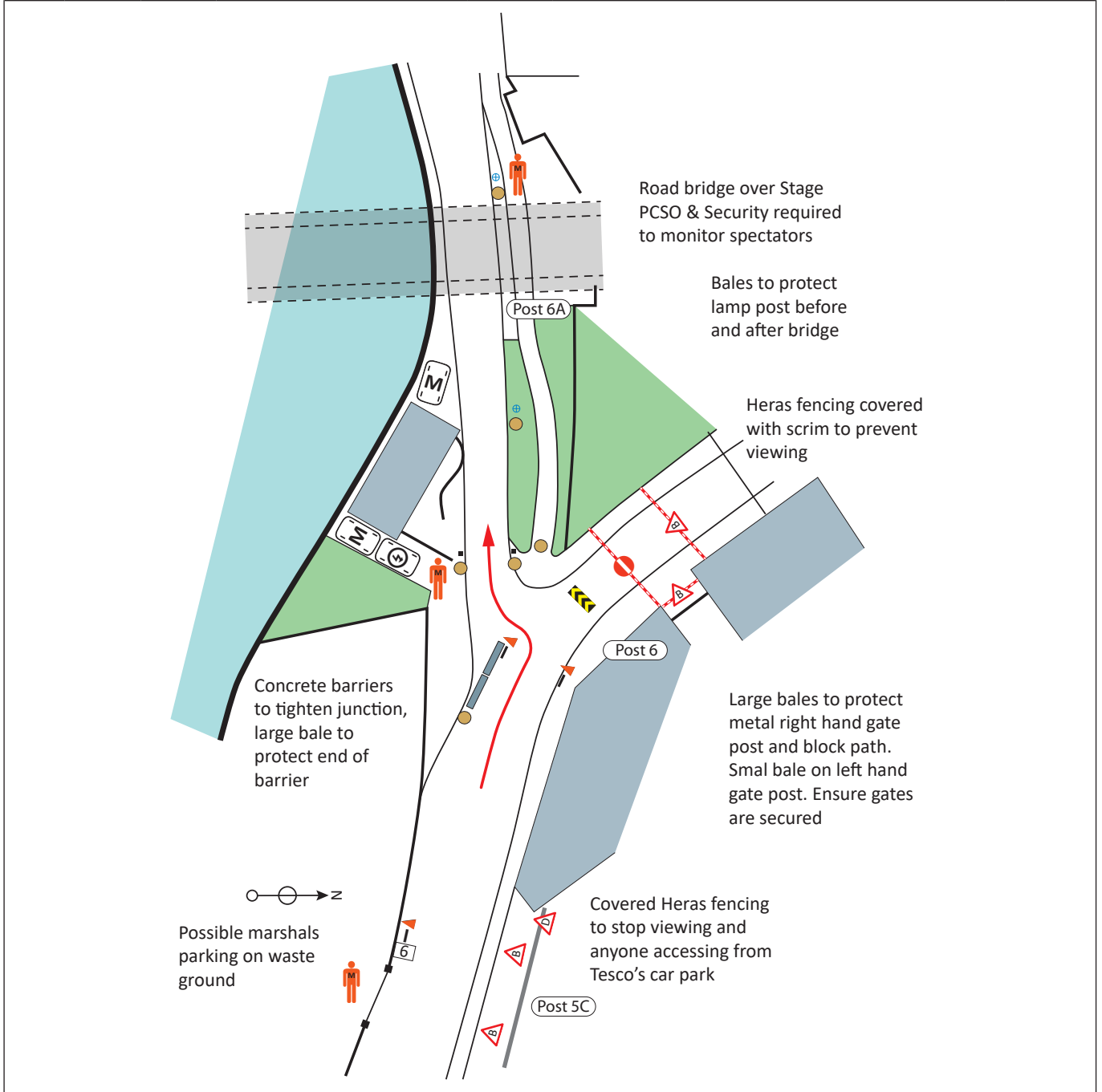


Post No.	Km / Miles		Direction	Safety & Radio	Information	Predicted Marshals
	Total	Inter				
5A					Crowd barrier along pavement edge in front of the flats Tape and sign side road	2
5B	0.23 0.14	0.04 0.02			Protect end of wall with bale Tape pedestrian gate on left	1
5C	0.25 0.16	0.02 0.01			Rear pedestrian entrance to Tesco Fence off with Heras Fencing Marshals to park in Tesco car park	1


Post No.	Miles		Direction	Safety & Radio	Information	Predicted Marshals
	Total	Inter				

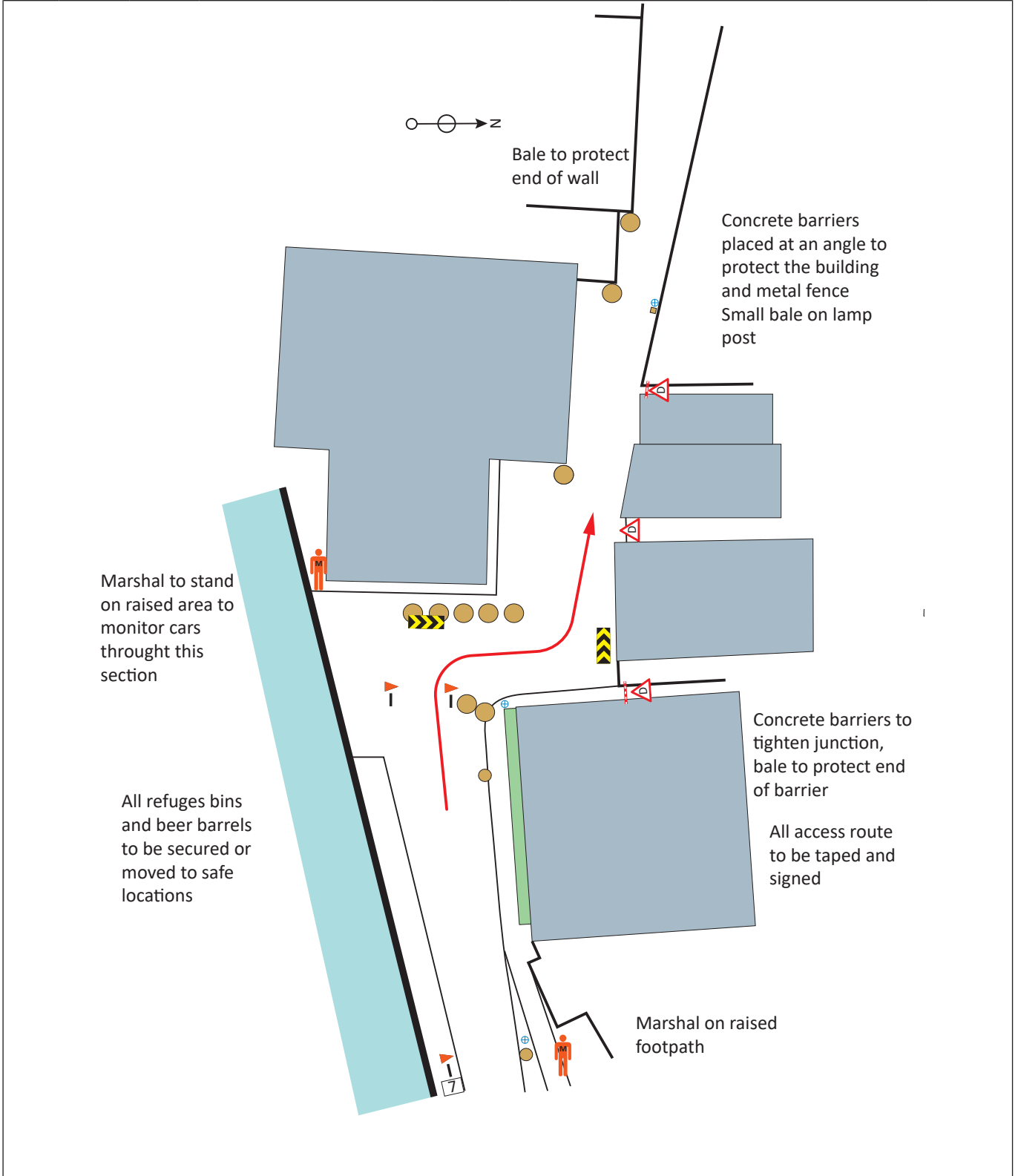


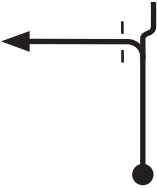
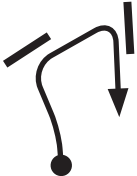
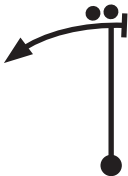
Post No.	Km / Miles		Direction	Safety & Radio	Information	Predicted Marshals
	Total	Inter				
6	0.30 0.19	0.05 0.03			Tightened Junction with concrete barriers Use bales and Heras fencing to block access. Use scrim on fencing to block viewing	1M 1RF



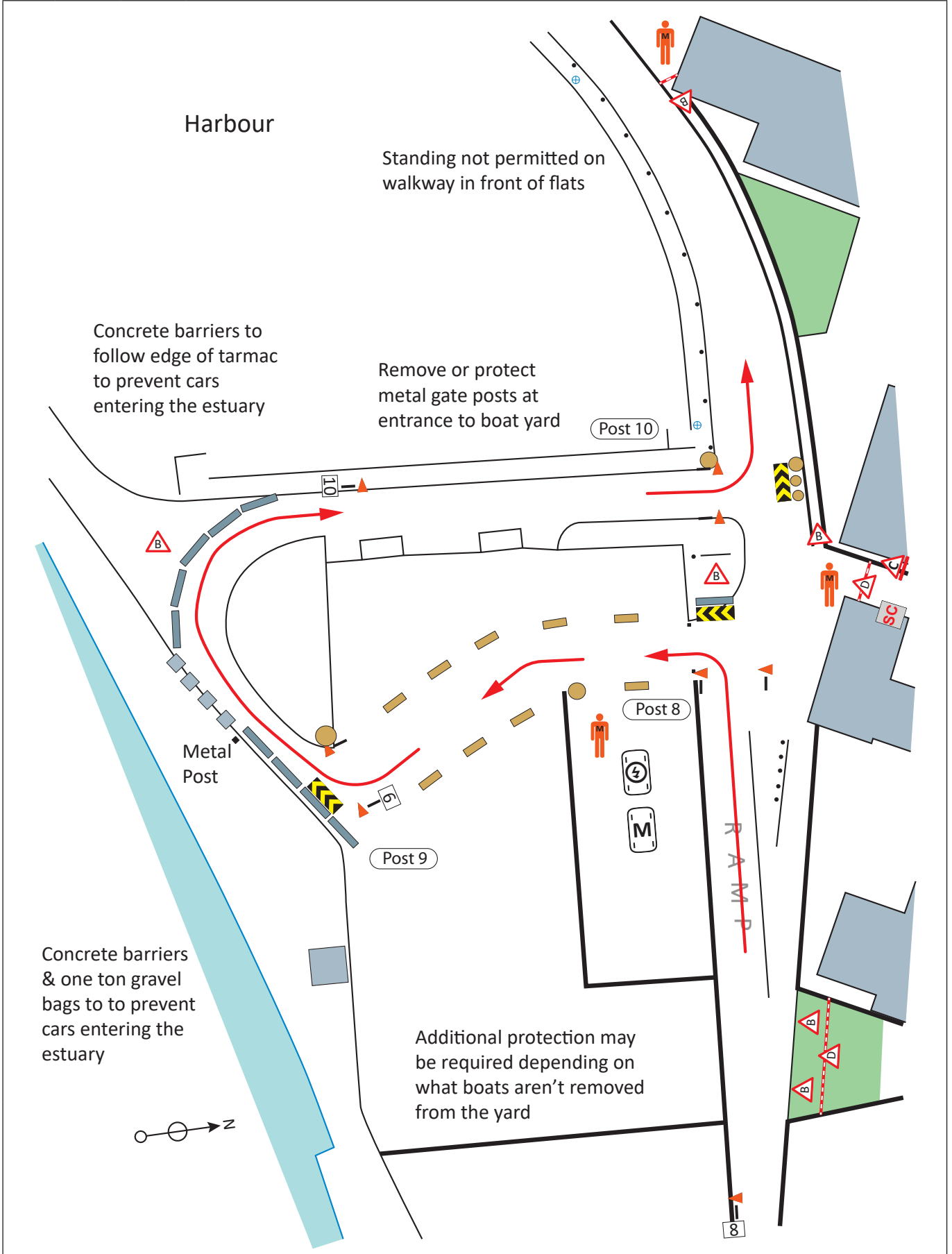
6A					Under Bridge Bales to protect lamp posts on right before & after bridge	
----	--	--	--	--	--	--

Post No.	Km / Miles		Direction	Safety & Radio	Information	Predicted Marshals
	Total	Inter				
7	0.37	0.07			Concrete barriers to create square right / square left junction Bale to protect lamp post on corner Block alley way to the right Bales to protect metal fence and wall on left	2

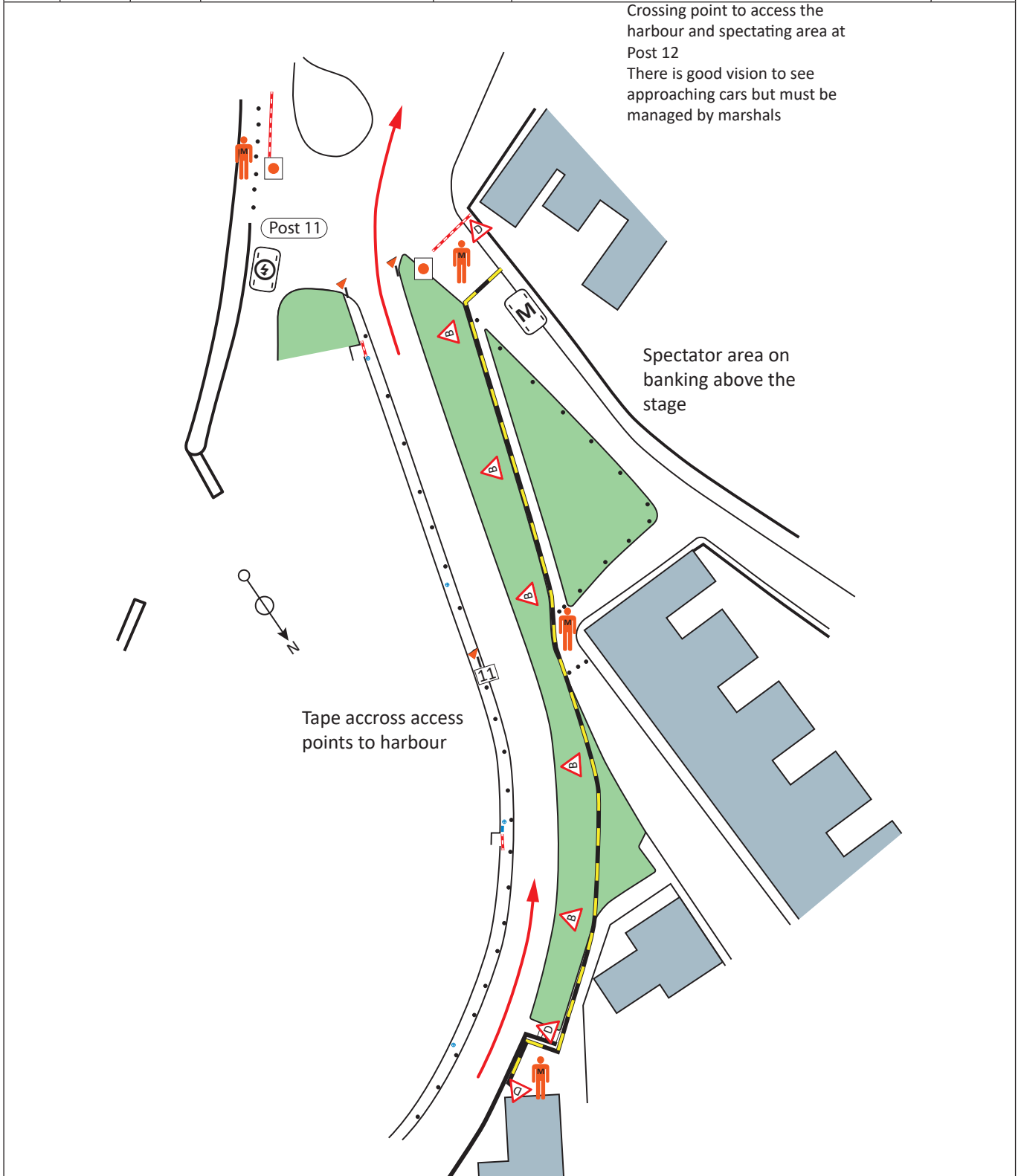


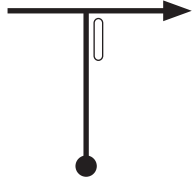

Post No.	Km / Miles		Direction	Safety & Radio	Information	Predicted Marshals
	Total	Inter				
8	0.45 0.28	0.08 0.05		Ⓒ	Ramp Bales to protect signs Protect or remove gate posts Block access between building on right	1M 1RM
9	0.47 0.29	0.02 0.01			Concrete barriers to stop cars entering the river and harbour	0
10	0.55 0.34	0.08 0.05			Bales to protect wall No spectators allowed between fences Block alley way at junction	0

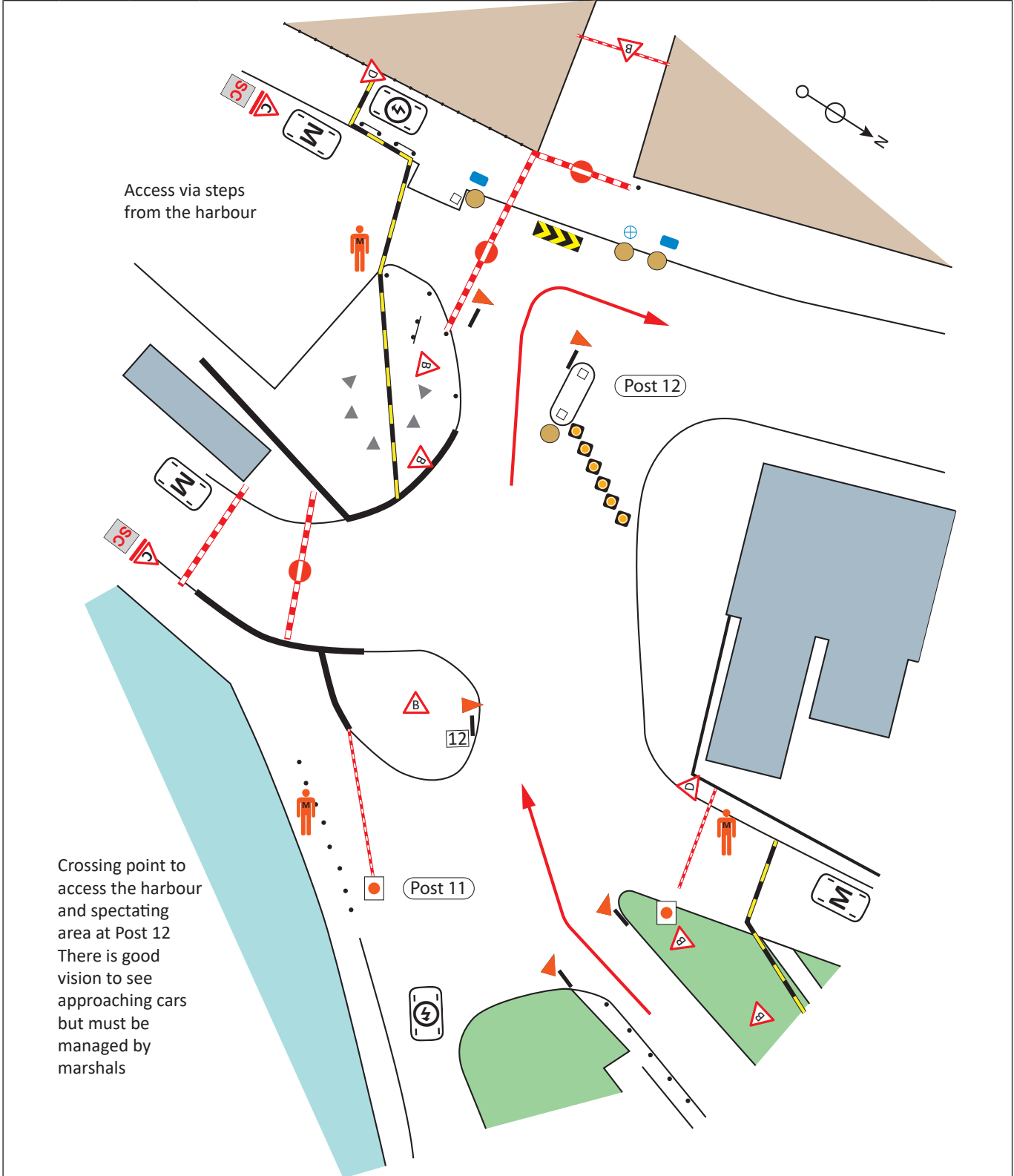
Post No.	Miles		Direction	Safety & Radio	Information	Predicted Marshals
	Total	Inter				



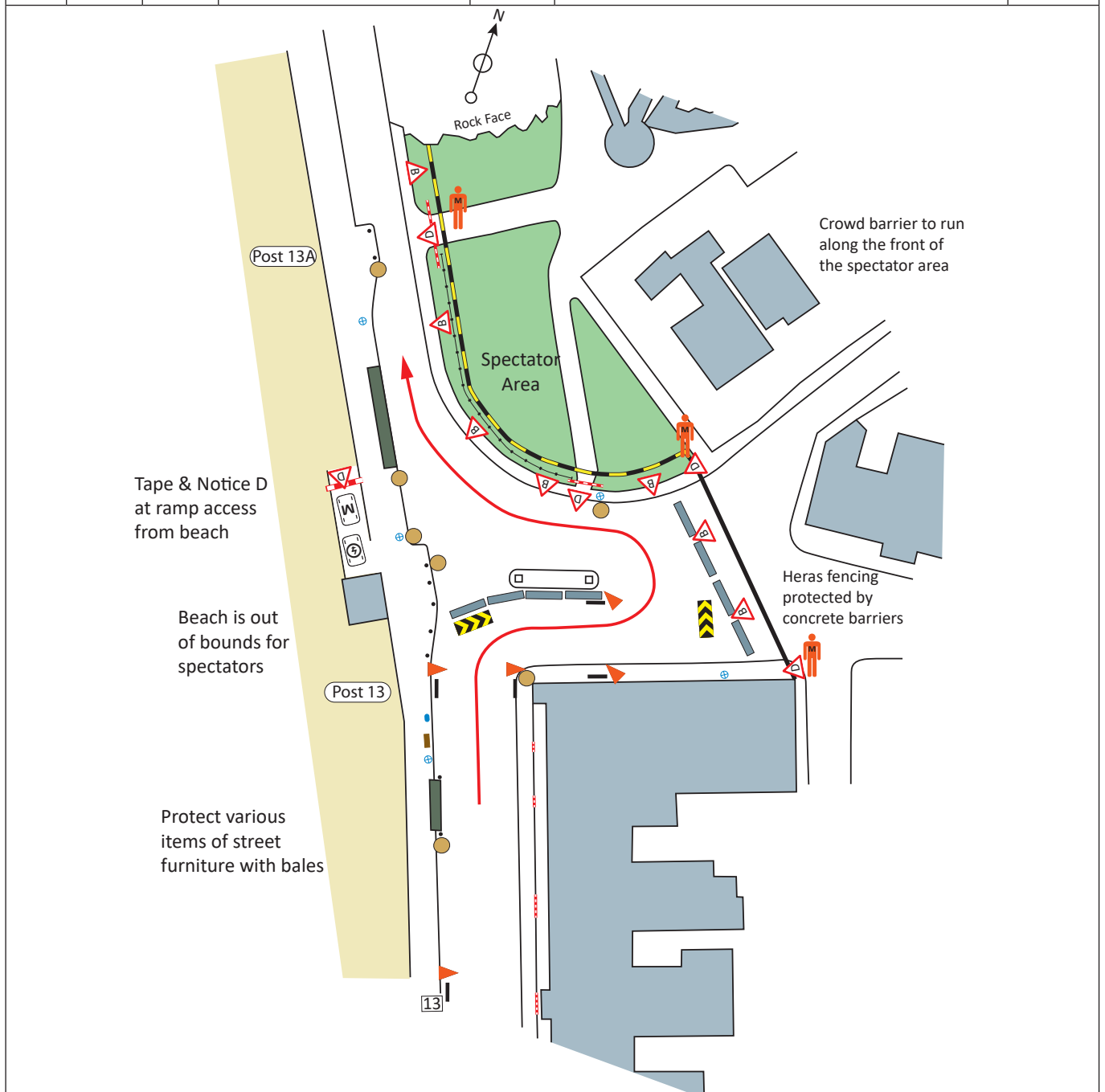
Post No.	Km / Miles		Direction	Safety & Radio	Information	Predicted Marshals
	Total	Inter				
11	0.69	0.14		Ⓒ	Spectator viewing on banking on right	2M 1RM
	0.43	0.09				






Post No.	Km / Miles		Direction	Safety & Radio	Information	Predicted Marshals
	Total	Inter				
12	0.73	0.04			Keep to left of traffic island	3M 1RF
	0.45	0.02				

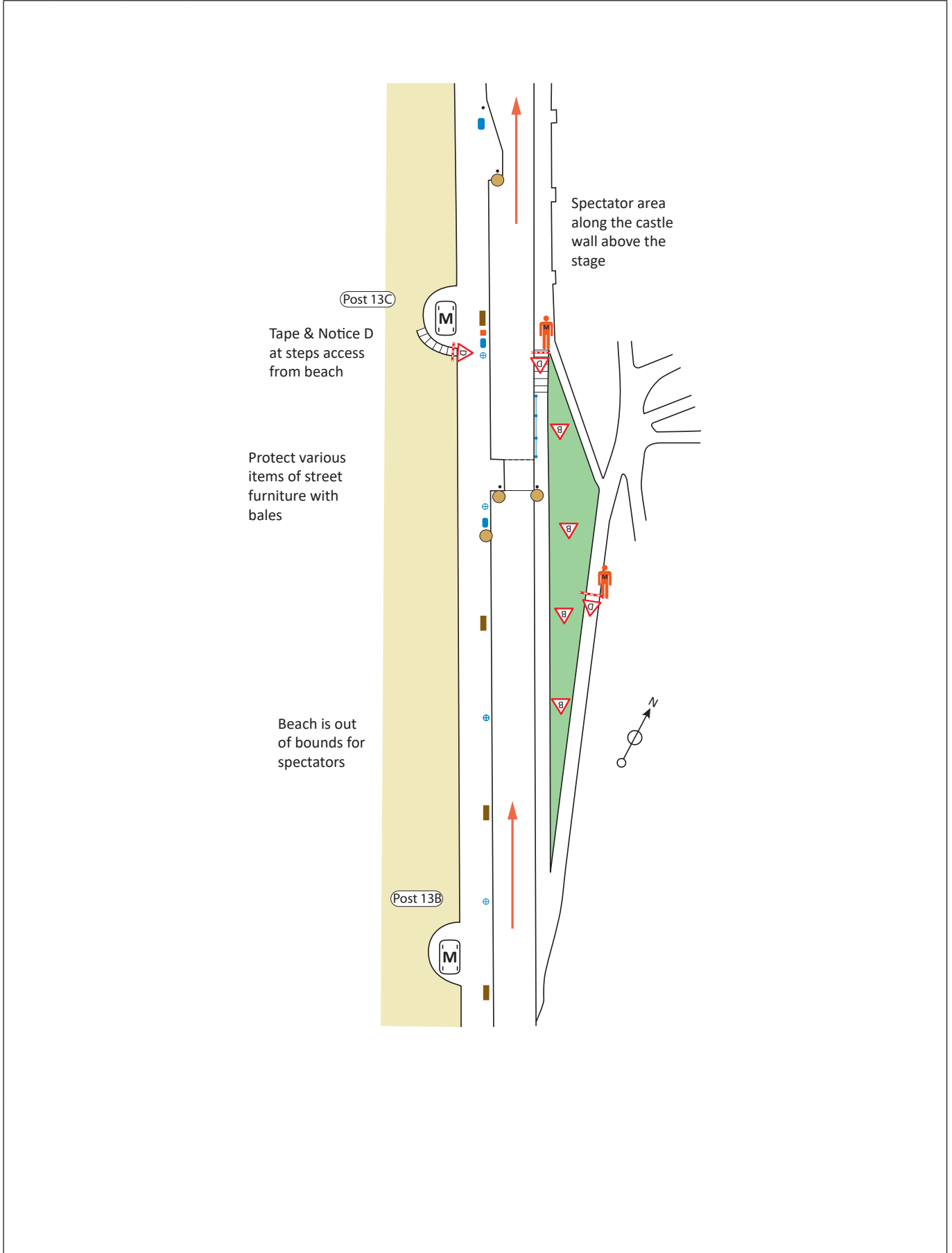




Post No.	Km / Miles		Direction	Safety & Radio	Information	Predicted Marshals
	Total	Inter				
12A	0.87	0.14			Protect various items of street furniture, flower beds, barriers in front of the house entrances	0
	0.54	0.09				
13	0.87	0.14		Ⓒ	Concrete barrier to define route to turn cars to the right Protect bollards on traffic island Fan Zone on Castle Grounds	2M 1RM
	0.54	0.09				

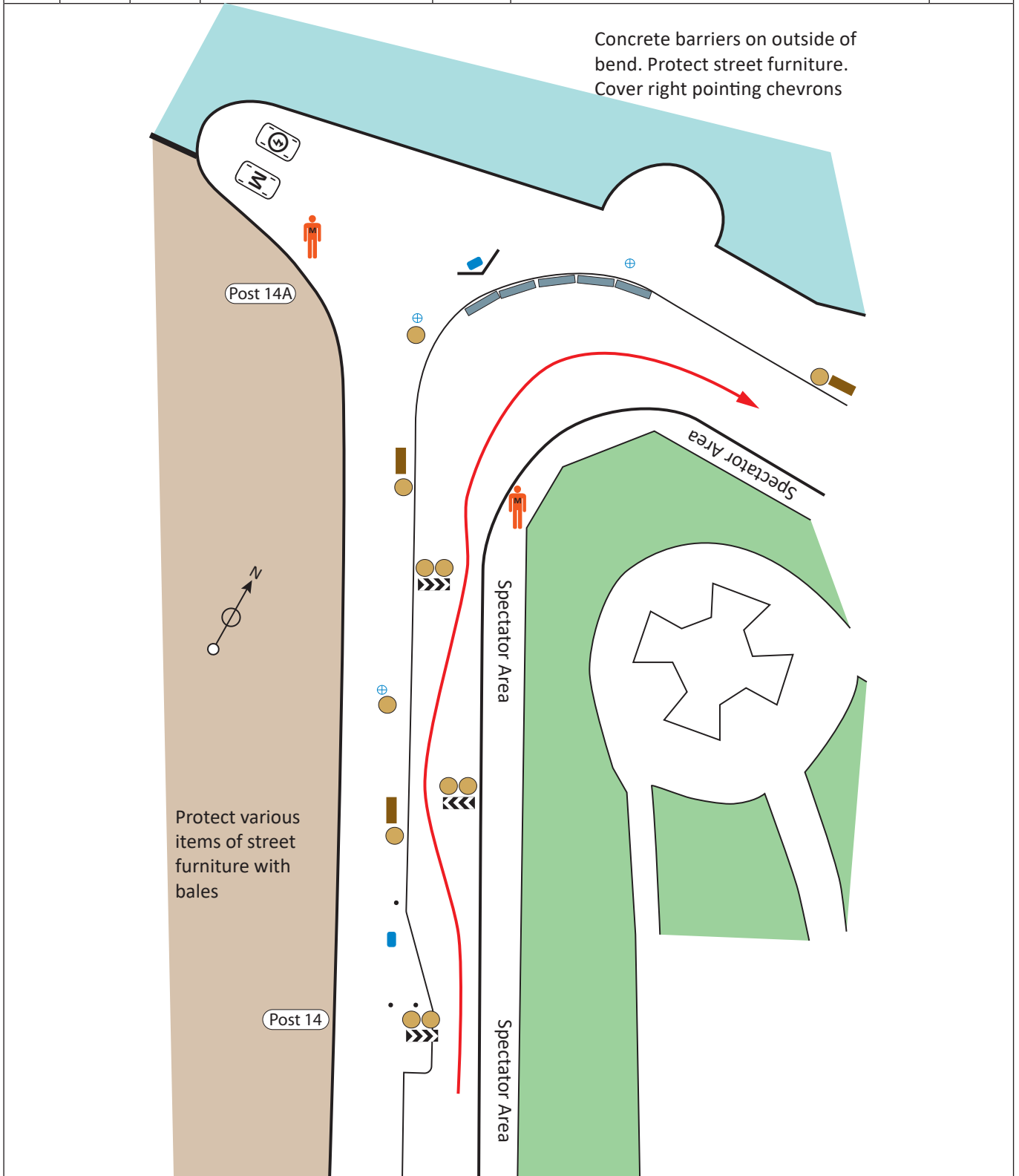




Post No.	Km / Miles		Direction	Safety & Radio	Information	Predicted Marshals
	Total	Inter				
13A	0.97	0.10			Block footpath on right	0
	0.60	0.06				
13B	1.01	0.04			Block ramp leading to spectator area Protect street furniture	1
	0.63	0.02				
13C	1.06	0.05			Block steps to castle grounds Protect street furniture	1
	0.66	0.03				

Post No.	Miles		Direction	Safety & Radio	Information	Predicted Marshals
	Total	Inter				

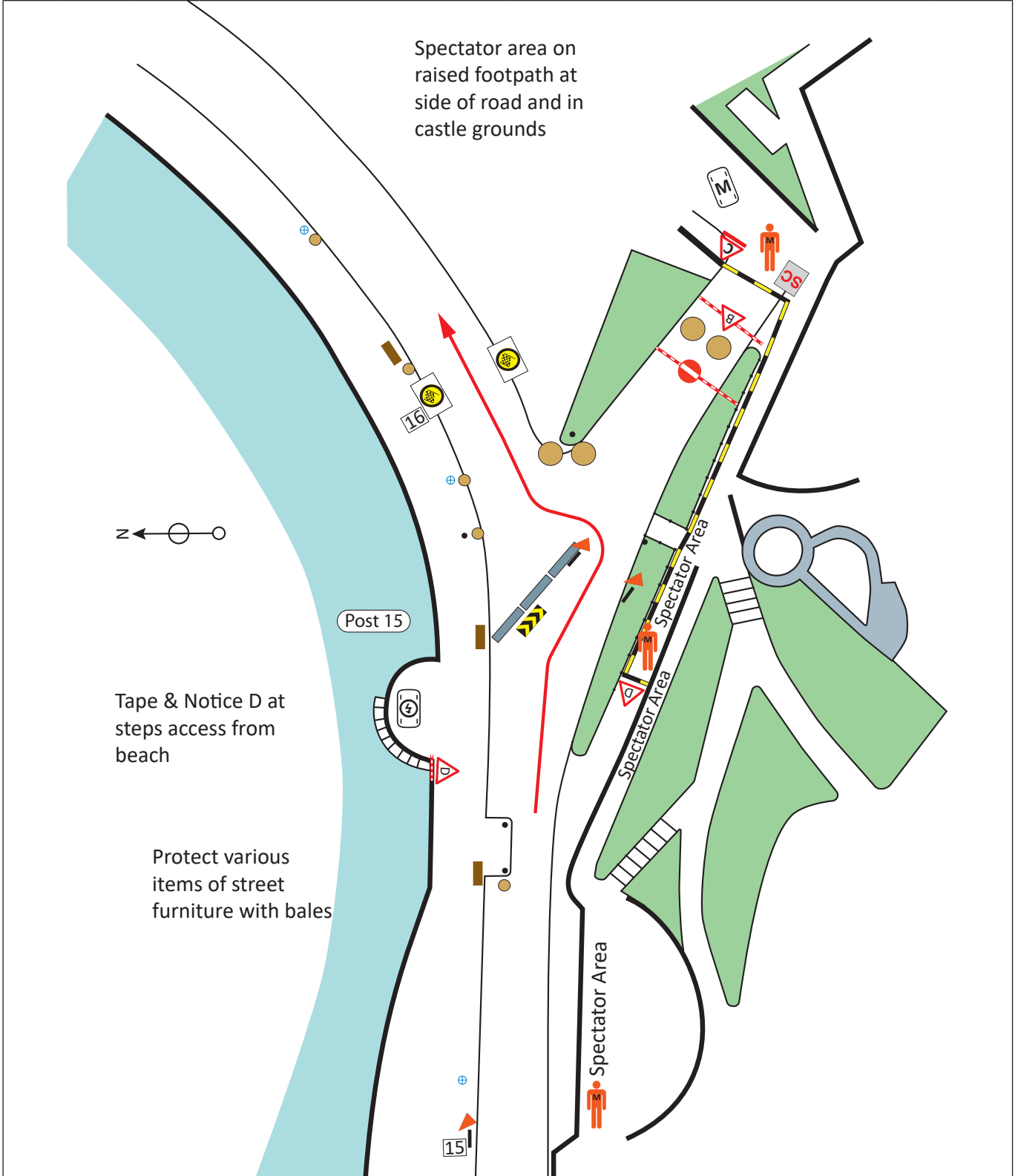





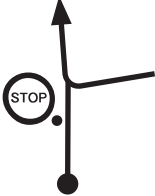

Post No.	Km / Miles		Direction	Safety & Radio	Information	Predicted Marshals
	Total	Inter				
14	1.11	0.05			Chicane Fan Zone on Castle Grounds	2M
	0.69	0.03				



Post No.	Km / Miles		Direction	Safety & Radio	Information	Predicted Marshals
	Total	Inter				
14A	1.15	0.04			Concrete barriers on outside of bend Protect street furniture Marshals to park on the left Fan Zone on Castle Grounds	1RM
	0.71	0.02				

Post No.	Km / Miles		Direction	Safety & Radio	Information	Predicted Marshals
	Total	Inter				
15	1.25	0.10		Ⓢ	Tighten junction Fan Zone on Castle Grounds	2
	0.78	0.06				



Post No.	Km / Miles		Direction	Safety & Radio	Information	Predicted Marshals
	Total	Inter				
16	1.34 0.83	0.09 0.06			Flying Finish 52°24.866'N, 4°05.346'W ///dozens.pines.loose	2TK
--	-- --	-- --			40 metres from Flying Finish 80 metres 120 metres	--
17	1.50 0.93	0.16 0.10			Stop Line 52°24.931'N, 4°05.246'W ///upon.abode.installs	1M 4TK

Post No.	Miles		Direction	Safety & Radio	Information	Predicted Marshals
	Total	Inter				

